



Evogator

WL: 1000mm; H: 500mm; W: 300mm
Weight: Empty 4.6kg / Full 16kg



Evo 1m

WL: 1000mm; H: 555mm; W: 400mm
Weight: Empty 6.3kg / Full 26.3kg



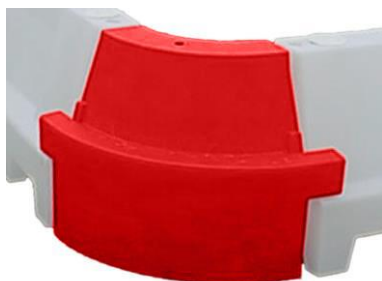
Evo 80

WL: 1200mm; H: 800mm; W: 400mm
Weight: Empty 10kg / Full 29kg



Evo 1.5m

WL: 1500mm; H: 555mm; W: 400mm
Weight: Empty 10kg / Full 30kg



Evo Angle

WL: 430mm; H: 555mm; W: 580mm
Weight: Empty 4.5kg / Full 18.5kg
Fits Evo 1m and Evo 1.5m



Sitewall

WL: 1600mm; H: 650mm; W: 400mm
Weight: Empty 15kg / Full 300kg



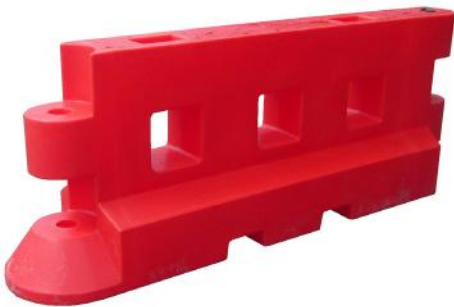
Novus

WL: 2000mm; H: 800mm; W: 520mm
Weight: Empty 25kg / Full 180kg



RB2000

WL: 1650mm; H: 1000mm; W: 400mm
Weight: Empty 35kg / Full 400kg



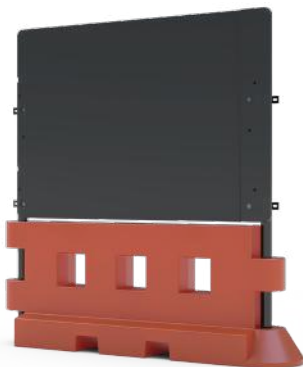
GB2

WL: 2000mm; H: 800mm; W: 500mm
Weight: Empty 32kg / Full 350kg



RB22

WL: 2000mm; H: 800mm; W: 500mm
Weight: Empty 60kg / Full 600kg
Crash tested to BS EN1317 N1



Barrier Hoard - GB2

WL: 2060mm; H: 2300mm; W: 102mm
Weight: 25kg



Barrier Hoard - RB22

WL: 2060mm; H: 2200mm; W: 120mm
Weight: 25kg



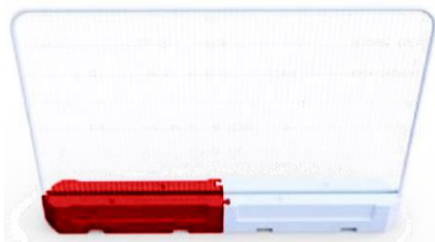
Firmus Professional

WL: 2005mm; H: 1000mm; W: 504mm
Weight: 11.2kg
Chapter 8 Compliant



Firmus

WL: 2000mm; H: 1075mm; W: 560mm
Weight: 12kg
Chapter 8 Compliant



Rota Slot

WL: 3500mm; H: 300mm; W: 400mm
Weight: Empty 24kg / Full 304kg



Rota Block Mini

WL: 1000mm; H: 400mm; W: 400mm
Weight: Empty 9kg / Full 105kg



Rota Block

WL: 640mm; H: 985mm; W: 720mm
Weight: Empty 22kg / Full 333kg



Gradus Block

H: 295mm; W: 609mm
Weight: Empty 2kg / Full 44kg



Fortis Barrier

WL: 1500mm; H: 443mm; W: 510mm
Weight: 58kg



Site Fortis

WL: 1500mm; H: 2003mm; W: 510mm
Weight: 72.4kg



Fortis Corner

WL: 1550mm; H: 443mm; W: 510mm
Weight: 58kg; Max angle 45 degrees



Pedestrian Fortis

WL: 1500mm; H: 1007mm; W: 510mm
Weight: 63.2kg



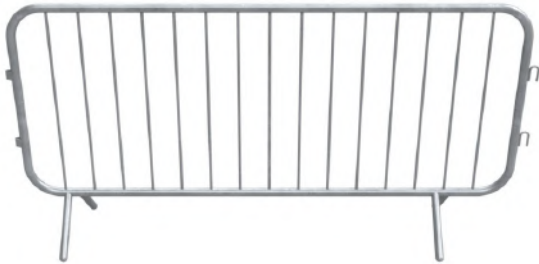
Fortis Crash Barrier

WL: 1500mm; H: 496mm; W: 510mm
Weight: 66kg



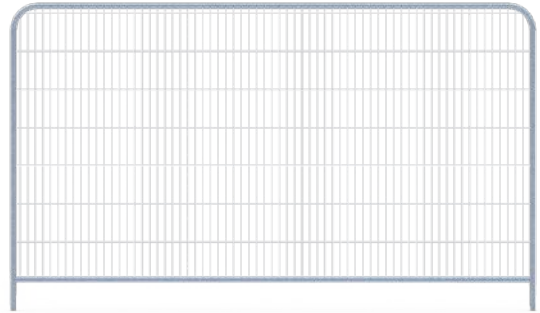
Fortis End

WL: 510mm; H: 443mm; W: 510mm
Weight: 29kg



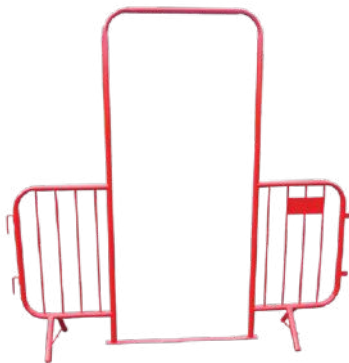
Pedestrian Barrier

WL: 2300mm; H: 1100mm; W: 500mm
Weight: 7.8kg



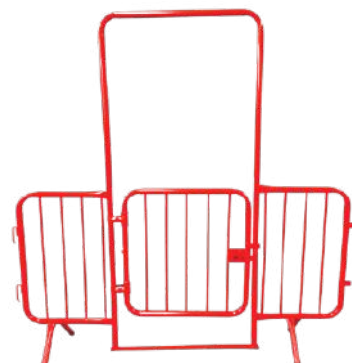
3.5m Mesh

WL: 3500mm; H: 2000mm; W: 42mm
Weight: 12kg



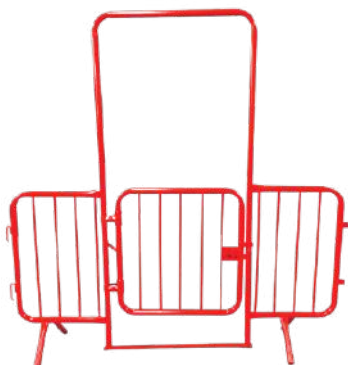
Pedestrian Walk Through

WL: 2215mm; H: 2165mm; W: 461mm
Weight: 14kg



Pedestrian Gate

WL: 2215mm; H: 2165mm; W: 461mm
Weight: 20kg



Spring Loaded Gate

WL: 2215mm; H: 2165mm; W: 461mm
Weight: 25kg

Branding, Customisation &
Accessories Available

