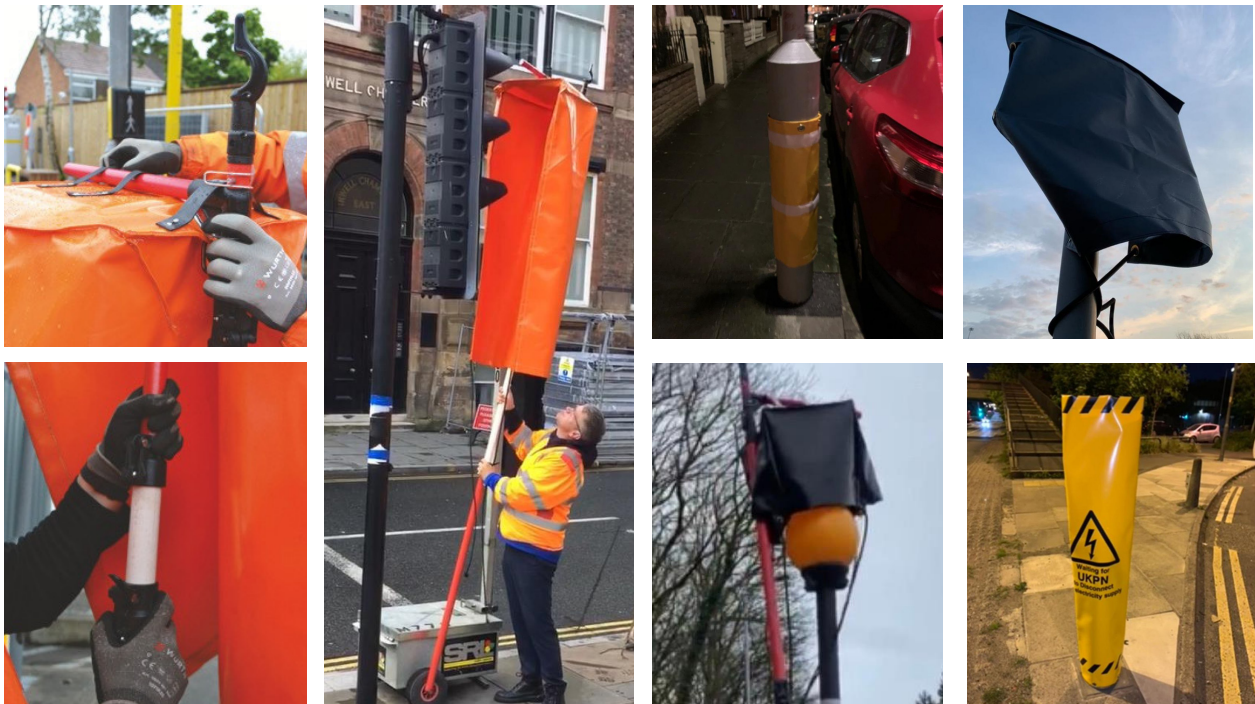


# Cover Me Bags

No need for ladders and no need for tape

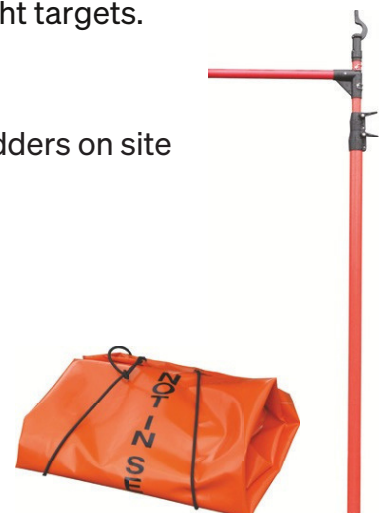


**Applications:** Traffic Signals, Level Crossing Signals, Road Signs, Belisha Beacons, Push-Buttons, and Street Lights.

**CoverMe bagging system** makes the process and ease of bagging off signals, road signs and Belisha beacons much safer by eliminating the use of ladders. It allows operatives from the wider highways team to be used as there is no ladder training required. This makes working in more confined locations easier where ladders would have required slag or where they would have impeded the footway. This helps remove working at height accidents and meet zero working at height targets.

## Advantages:

- Eliminates the “working at height” risk, removes the requirement for ladders on site
- Eliminates TM requirements - reduces disruption and cost
- Fast and easy installation by a single operative
- Secures and fastens to signal backboard
- Overcomes working width restrictions
- Fully adjustable pole
- Poles are made from lightweight non-conductive GRP material
- Easily transportable
- Available with bespoke badging
- Made with recyclable material





*"Having worked on the railway for 15 years we have only ever used bin bags or shrink-wrap to cover signage but thanks to the power of social media I have finally found a supplier who can meet our needs on the infrastructure."*

*Made from recycled materials, easy to install, avoids working at height risks/costs, and reusable, what a great product!"*

**Carl Miller, Siemens Mobility**

*"We chose the Cover-Me bags for their ease of use and making the process of bagging off signals much safer by elimination of ladder use."*

*"This allowed us to use operatives from the wider highways pool as there was no requirement for ladder training. In addition to this, eliminating the use of ladders was paramount due to the confined spaces"*

**Chris Pearson, Blackburn Council**

