

# Using digital technology to prevent incursions and minimise confrontation

**Traffic management operatives were digitally alerted to incursions or closure breaches during the resurfacing works of three high-speed roundabouts on the A6 from the A421 to Wilstead. The alerts allowed them to take immediate and appropriate action to remove themselves and the workforce from potential risk.**

## The Challenge

Hanson and Bedford Borough Council approached Chevron TM to provide traffic management services to support resurfacing works.

The challenges presented by these works included:

- There were a number of villages within the works areas
- There were a number of businesses which operated on a 24-hour basis within the road closure points
- Works could only take place at night
- Hanson and Bedford Borough Council wanted to provide additional protection to its workers, particularly from confrontation with road users

## Our Solution

Chevron TM worked with Highway Resource Solutions (HRS) to install an innovative traffic management system which incorporated two digital products – the Customer Communication Terminal (CCT) and the Intellicone® Portable Site Alarm (PSA). Having used these products on previous schemes, Chevron TM was confident that they would reduce face-to-face interaction with road users while ensuring real-time communication and minimise risk to road workers by warning them in advance of potential incursions.



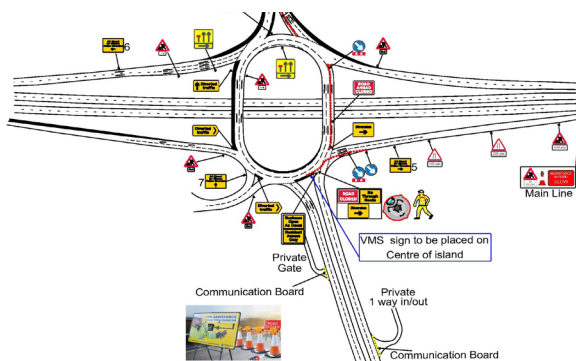
Intellicone® PSAs were strategically placed throughout the workzone to provide various levels of protection. One Yellow PSA and motion sensor lamps were placed at unmanned closure points. If moved, the TM foreman would receive an alert on his phone. These alarms were linked to two blue Intellicones®, located inside the workzone. If activated, these blue Intellicones® would flash red lights and sound an alarm to alert road workers to move to a position of safety.

## Hanson and Bedford Borough Council A6 Roundabouts Highways

As an additional layer of protection, two red Intellicone® PSAs with incursion alarms were also used. This allowed TM operatives to manually activate the blue contractor alarms and alert the road workers.



Chevron TM also opted to install two CCTs in this scheme. They were placed at the closure points alongside the yellow Intellicone® PSA. The CCT is an intercom system which linked directly to the TM foreman's mobile phone. It allowed the closure points to remain unmanned but ensured that road users had instant and direct communication with road workers. Using the CCTs removed face-to-face interaction with the general public and ultimately protected road workers from potential confrontation.



### The Outcome

Over the period of the works, the unmanned closure point was activated approximately once each night by members of the public trying to enter the closure. This equates to over 22 potential confrontations which were avoided. It also allowed road workers to focus on their core activities without the distraction of dealing with the general public.

The incursion alarm button was hit 13 times, which alerted road workers to incursions and allowed them to take appropriate action to move to a place of safety.

**“A motorbike, driven by a worker from a nearby warehouse, breached the work site by driving across the mud. The panic button was pressed alerting the workforce and any danger was avoided. When the alarm sounded it has scared the driver away.”**

**Kieran Johnson, Traffic Management Foreman**

**“Very impressed with the Intellicone® system. I like the fact in places, it removes your operatives from confrontation. We have had one incursion, with a moped nipping through the cones and using the subway under the A6. The system alerted us and worked well. This occurred during a site audit on Monday, so the system worked well and showed its worth to the auditor.”**

**Nick Jackson, Hanson UK Site Manager**